

15 Truck Attributes

In this chapter specific truck attributes are modelled.

15.1 ER Diagram

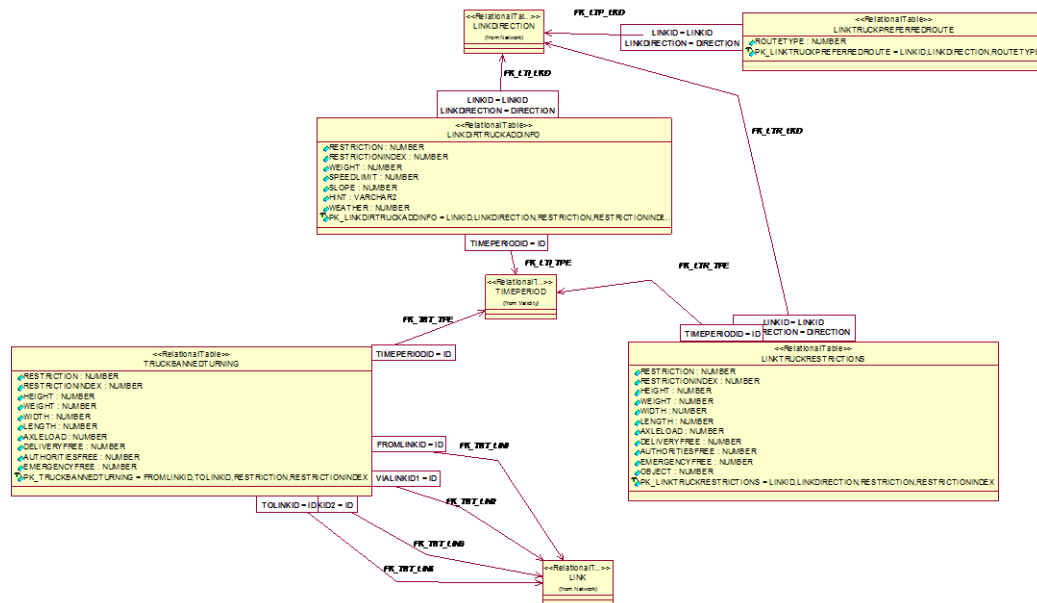


Diagram 17: Truck attributes

15.2 Tables

TABLE	FROM	DESCRIPTION
LINK	Network	Description of link attributes, which are valid for both directions.
LINKDIRECTION	Network	Description of link attributes, which are depending on direction.
LINKDIRTRUCKADDINFO	TruckAttributes	n.n.
LINKTRUCKPREFEREDROUTE	TruckAttributes	n.n.
LINKTRUCKRESTRICTIONS	TruckAttributes	n.n.
TRUCKBANNEDTURNING	TruckAttributes	

G		
TIMEPERIOD	Validity	Definition of time periods.

15.3 LINKDIRTRUCKADDINFO

LINKDIRTRUCKADDINFO table

This table contains additional information relevant for trucks. The speed limit is set to the NavTeq value (NavTeq publishes only speed limits which are valid for all trucks). Main type 60 with subtypes 51 (steep hill downwards) or 52 (steep hill upwards) are converted into the slope attribute, depending on the directional information. Main type 60 with subtypes 53 to 56 will be published as textual hints and additionally as POIs, if possible. More than one textual hint will be published in the same field separated by a slash, e.g. TREE/CURVE.

LINKDIRTRUCKADDINFO								
Shortname: LTI								
n.n.								
n.n.								
Name	Type	Fmt	Def	Min	Max	Prop	No	Description
LINKID	Ref. to LINKDIRECTI ON table					PKFK	1	reference to directed link
LINKDIRECTION	Ref. to LINKDIRECTI ON table					PKFK	2	reference to directed link
RESTRICTION	NUMBER	10.0	1	1	15	PK	3	reference to directed link
RESTRICTIONINDEX	NUMBER	10.0	1	1	255	PK	4	index per directed link
TIMEDOMAINID	Ref. to TIMEDOMAIN TRUCK table					FKOpt	5	reference to timedomain
WEIGHT	NUMBER	16.6	0	0	99.9 000 02	Opt	6	weight in tons
SPEEDLIMIT	NUMBER	10.0	0	0	999	Opt	7	truck speed limit, always valid for all trucks
SLOPE	NUMBER	16.6	0	-	99.9 000	Opt	8	gradient in percent

				100	02			
HINT	VARCHAR2	80				Opt	9	textual description of additional information
WEATHER	NUMBER	10.0	0	0	7	Opt	10	weather depent

Table 133: LINKDIRTRUCKADDINFO

LINKDIRTRUCKADDINFO data fields

RESTRICTION	
Value	Description
1	Trucks not allowe (= default)
2	Trucks with trailers not allowed
3	Hazardous goods not allowed
4	Combustibles not allowed
5	Hazardous to water not allowed
6	Tunnel restriction code B.
7	Tunnel restriction code C.
8	Tunnel restriction code D.
9	Tunnel restriction code E.
10-15	(unused)
HINT	
Value	Description
GROUND	Risk of grounding
CURVE	Sharp curve(s)
WIND	Lateral wind
TREE	Tree overhang
NARROW	Narrow road
WEATHER	
Value	Description
1	rain
2	snow
3	fog

15.4 LINKTRUCKPREFERREDROUTE

LINKTRUCKPREFERREDROUTE table

LINKTRUCKPREFERREDROUTE								
Shortname: LTP								
n.n.								
n.n.								
Name	Type	Fmt	Def	Min	Max	Prop	No	Description
LINKID	Ref. to LINKDIRECTI ON table					PKFK	1	reference to directed link
LINKDIRECTION	Ref. to LINKDIRECTI ON table					PKFK	2	reference to directed link
ROUTETYPE	NUMBER	10.0	9	1	31	PK	3	Type of preferred route

Table 134: LINKTRUCKPREFERREDROUTE

LINKTRUCKPREFERREDROUTE data fields

ROUTETYPE	
Value	Description
1	STAA
2	TD
3	NRHM (National Repository of non-radioactive Hazardous Materials)
4	Class 1 hazardous materials (explosives)
5	PIH (Poisonous Inhalation Hazard materials)
6	Medical waste materials
7	Radioactive material
8	General hazardous goods
9	General Preferred Route (= default value)
10	Preferred route for TRC (tunnel restriction code) B
11	Preferred route for TRC (tunnel restriction code) C
12	Preferred route for TRC (tunnel restriction code) D
13	Preferred route for TRC (tunnel restriction code) E
15	National Access

16	Truck bypass
17	B-Double Route
18	Local
19	LangLKW (Deu)
20	LangLKW (Nld)
21	Preferred Routes (Navteq Functional Road Class 0 Override)
22	Preferred Routes (Navteq Functional Road Class 1 Override)
23-31	unused

15.5 LINKTRUCKRESTRICTIONS

LINKTRUCKRESTRICTIONS table

LINKTRUCKRESTRICTIONS								
Shortname: LTR								
n.n.								
n.n.								
Name	Type	Fmt	Def	Min	Max	Prop	No	Description
LINKID	Ref. to LINKDIRECTI ON table					PKFK	1	reference to directed link
LINKDIRECTION	Ref. to LINKDIRECTI ON table					PKFK	2	reference to directed link
RESTRICTION	NUMBER	10.0	1	1	15	PK	3	vehicle type not allowed on this link
RESTRICTIONINDEX	NUMBER	10.0	1	1	255	PK	4	index per directed link and restriction
HEIGHT	NUMBER	16.6	0	0	99.9 9	Opt	5	Height in metres above which the restr. is valid
WEIGHT	NUMBER	16.6	0	0	200	Opt	6	weight in tons above which the restr. is valid
WIDTH	NUMBER	16.6	0	0	99.9 9	Opt	7	width in metres above which the restr. is valid

LENGTH	NUMBER	16.6	0	0	99.9 9	Opt	8	length in metres above which the restr. is valid
AXLELOAD	NUMBER	16.6	0	0	99.9 9	Opt	9	weight per axle in tons above which the restr. is valid
DELIVERYFREE	NUMBER	10.0	0	0	1	Opt	10	Set to 1 if delivery / residential transports are exempted from the restriction.
AUTHORITIESFREE	NUMBER	10.0	0	0	1	Opt	11	Set to 1 if authority vehicles (e. g. municipal) are exempted from the restriction.
EMERGENCYFREE	NUMBER	10.0	0	0	1	Opt	12	Set to 1 if emergency vehicles are exempted from the restriction.
TIMEDOMAINID	Ref. to TIMEDOMAIN TRUCK table					FKOpt	13	reference to time domain
OBJECT	NUMBER	10.0	0	0	8	Opt	14	type of structure causing this restriction
NODE1ID	Ref. to NODE table					FKMan	15	reference to from node
NODE2ID	Ref. to NODE table					FKMan	16	reference to to node

Table 135: LINKTRUCKRESTRICTIONS

LINKTRUCKRESTRICTIONS data fields

RESTRICTION	
Value	Description
1	Trucks not allowed (= default)
2	Trucks with trailers not allowed
3	Hazardous goods not allowed
4	Combustibles not allowed
5	Hazardous to water not allowed

6	Tunnel restriction code B.
7	Tunnel restriction code C.
8	Tunnel restriction code D.
9	Tunnel restriction code E.
10	Tunnel restriction code A
11-15	(unused)
OBJECT	
Value	Description
0	(default)
1	Bridge
2	Tunnel
3	Other

15.6 TRUCKBANNEDTURNING

TRUCKBANNEDTURNING table

This table contains banned turnings for trucks. The banned turning is only applicable to the transport systems which are set in TRUCKTSYSSET. The last 2 bits are always set to 0. Time dependencies are indicated by the time period.

TRUCKBANNEDTURNING								
Shortname: TBT								
Name	Type	Fmt	Def	Min	Max	Prop	No	Description
FROMLINKID	Ref. to LINK table					PKFK	1	reference to from link
VIALINKID1	Ref. to LINK table					FKOpt	2	reference to first via link
VIALINKID2	Ref. to LINK table					FKOpt	3	reference to second via link
TOLINKID	Ref. to LINK table					PKFK	4	reference to to link
RESTRICTION	NUMBER	10.0	1	1	15	PK	5	vehicle type not

								allowed for this turn
RESTRICTIONINDEX	NUMBER	10.0	1	1	255	PK	6	index per directed link
TIMEDOMAINID	Ref. to TIMEDOMAIN TRUCK table					FKOpt	7	reference to timedomain
HEIGHT	NUMBER	16.6	0	0	99.9 9	Opt	8	height in metres, above which the restriction is valid
WEIGHT	NUMBER	16.6	0	0	99.9 9	Opt	9	weight in tons, above which the restriction is valid
WIDTH	NUMBER	16.6	0	0	99.9 9	Opt	10	width in metres weight, above which the restriction is valid
LENGTH	NUMBER	16.6	0	0	99.9 9	Opt	11	length in metres, above which the restriction is valid
AXLELOAD	NUMBER	16.6	0	0	99.9 9	Opt	12	weight per axle in tons, above which the restriction is valid
DELIVERYFREE	NUMBER	10.0	0	0	1	Opt	13	Set to 1 if delivery / residential transports are exempted from the turn restriction.
AUTHORITIESFREE	NUMBER	10.0	0	0	1	Opt	14	Set to 1 if authority vehicles (e.g. municipal) are exempted from the turn restrictions.
EMERGENCYFREE	NUMBER	10.0	0	0	1	Opt	15	Set to 1 if emergency vehicles are exempted from the turn restrictions

Table 136: TRUCKBANNEDTURNING

TRUCKBANNEDTURNING data fields

RESTRICTION	
Value	Description
1	Trucks not allowed (= default)

2	Trucks with trailers not allowed
3	Hazardous goods not allowed
4	Combustibles not allowed
5	Hazardous to water not allowed
6	Tunnel restriction code B.
7	Tunnel restriction code C.
8	Tunnel restriction code D.
9	Tunnel restriction code E.
10-15	(unused)