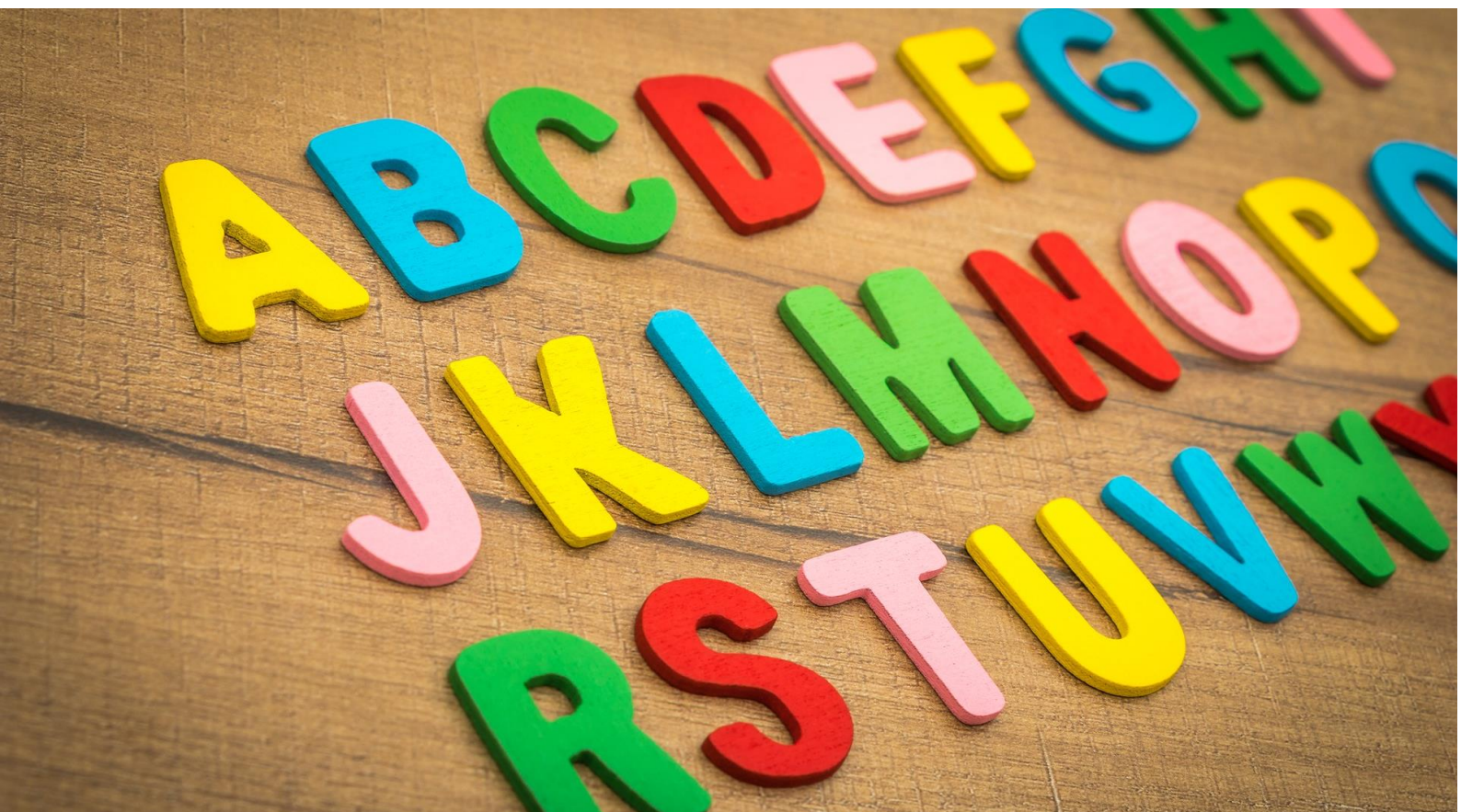


PTV Kindergartens Germany

R2021_V1.0



Contents

1	Introduction	3
2	Changes in the releases	3
3	General information on the data set	4
4	Content and field description	5
4.1	Module: Basic	5
4.2	Module: Communication	5

1 Introduction

In addition to “DDS Schools”, PTV has now added the “DDS Kindergartens” data set to its offer. The data set contains geocoded addresses as well as additional information about kindergartens, day nurseries and similar facilities in Germany.

The modules Basic and Communication are available. Details on the scope of the data set are described on the following pages.

The data package is maintained regularly and updated once a year. Despite careful research and checking, inconsistencies cannot be completely ruled out and there is no guarantee of a complete data set.

2 Changes in the releases

In release R2021_V1.0, a change was made to the module structures. Additional information such as the number of children, type of facility or type of provider is now included in the Basic module. Therefore, more information than before is now being offered. In the new “Communication” module, contact information is now also available in addition to the information from the Basic module.

The column names have been revised and now all consist of lowercase letters only.

The number of available kindergartens and day nurseries in the data set has increased and has been updated.

3 General information on the data set

Name of the product:	PTV Kindergardens
Content of the data set:	Kindergardens (public/private)
Coverage:	Germany
Subset possible:	See modules (chapter 4)
Source:	GeoJunxion BV, Capelle aan den IJssel; PTV Planung Transport Verkehr GmbH, Karlsruhe
Data type:	Microgeometry / POI
Geometry type:	Point
Number of data sets:	52,191
Data from:	Q1 / 2021
Release:	R2021_V1.0
Standard data format:	MapInfo TAB, ESRI shapefiles, Access, Excel, ASCII
Standard coordinate system:	Longitude / latitude (WGS 84)
Language:	German
File size:	Approx. 24 MB (Basic, TAB), approx. 39 MB (Communication, TAB)
Update interval:	Annually

4 Content and field description

4.1 Module: Basic

Column name	Description	Data type	Coverage in %**
hash	Unique hash value formed from the columns Name, Strasse, PLZ, Ort and Teilort	Characters	100
status	Possible values: update: hash existent in previous release, at least one other field is different insert: hash not existent in previous release, entry is new confirm: hash existent in previous release, all fields are identical	Characters	100
name	Name of the Kindergarten	Characters	100
strasse	Street, including house number	Characters	100
plz	Postcode	Characters	100
ort	Name of town	Characters	100
teilort	Name of district	Characters	52.36
szahl	Number of children	Short integer	58.44
pzahl	Number of places	Short integer	38.13
krippe	The value 1 indicates that it is a crèche. *	Short integer	53.11
kita	The value 1 indicates that it is a day nursery. *	Short integer	65.51
kindergart	The value 1 indicates that it is a kindergarten. *	Short integer	89.66
hort	The value 1 indicates that it is an after-school center. *	Short integer	14.85
tart	Type of facility provider	Characters	46.98
xcoord	X-coordinates	Floating point	100
ycoord	Y-coordinates	Floating point	100

4.2 Module: Communication

This module contains all the attributes in the Basic module plus communication data (phone, URL).

Column name	Description	Data type	Coverage in %**
url	Website	Characters	59.33
tel	Telephone number	Characters	74.69

* The value 0 indicates that it is not a kindergarten of this type.

** The coverage indicates the percentage of information which is available in the data sets for the respective characteristic.